

# **2005 ANNUAL GROUNDWATER REPORT**

This report has been prepared by Kaweah Delta Water Conservation District and presents groundwater measurements that were taken throughout the District. This information is intended to provide the District Board of Directors and participants with groundwater data that will allow for the evaluation of past and current groundwater conditions within the District.

The groundwater measurements were taken in the months of February and October for spring and fall, respectively, at wells located within the Kaweah Delta Water Conservation District boundaries. The data was collected by Kaweah Delta Water Conservation District, Kings County Water District, and Tulare Irrigation District.

Many groundwater measurements were taken, but only the groundwater depths from well sites in each respective season of 2004 and 2005 were compared. In the spring of 2005 the average depth to groundwater within the District was approximately 100 ft., which reflected an average increase in groundwater depth of 6.5 ft. The depth of groundwater for the fall of 2005 averaged 103.6 ft., which reflected an average decrease in groundwater depth of 13.4 ft.

# TABLE OF CONTENTS

<b>APPENDIX</b>	<b>PAGE</b>
PRELIMINARY REPORT	1
AVERAGE GROUNDWATER CHANGES	2
AVERAGE GROUNDWATER CHANGES BY HYDROLOGIC ZONES	3
DISTRICT GRAPHICAL ANALYSIS OF DEPTH COMPARISON	4
GRAPH OF HYDROLOGIC ZONES HISTORICAL FALL DEPTHS	5
GRAPH OF DEPTH VS. WATER YEARS	6
2004/2005 DEPTHS AND COMPARISONS (ZONES 1- 6)	Appendix

**KAWEAH DELTA WATER CONSERVATION DISTRICT  
WATER YEAR 2004 - 2005  
PRELIMINARY REPORT  
(IN ACRE-FEET)**

**WATER SUPPLY**

<b>TERMINUS INFLOW</b>	<u>624,420</u>
<b>CREEK FLOW</b>	<u>18,274</u>
<b>CVP</b>	<u>240,043</u>
<b>KINGS RIVER</b>	<u>80,064</u>
<b>TOTAL</b>	<u><u>962,801</u></u>

Terminus inflow of 624,420 AF was 145% of the 100-year average.  
The April - July flow of 451,289 AF was 159% of the 100-year average.

Creek Flow is the water year totals of Dry Creek, Yokohl Creek,  
and Cottonwood Creek.

# KAWEAH DELTA WATER CONSERVATION DISTRICT AVERAGE GROUND WATER CHANGES

## SPRING 2004 - 2005 COMPARISON

AGENCY RECORDING MEASUREMENTS	NUMBER OF WELLS MEASURED SPRING 2005	NUMBER OF WELLS COMPARED to 2004	CHANGE OF GROUNDWATER COMPARED TO 2004
KDWCD	109	100	-9.6
TID	57	45	-6.9
KCWD	17	14	16.8
<b>COMBINED</b>	<b>183</b>	<b>159</b>	

## FALL 2004 - 2005 COMPARISON

AGENCY RECORDING MEASUREMENTS	NUMBER OF WELLS MEASURED FALL 2005	NUMBER OF WELLS COMPARED to 2004	CHANGE OF GROUNDWATER COMPARED TO 2004
KDWCD	118	95	13.7
TID	96	78	11.4
KCWD	38	29	18.4
<b>COMBINED</b>	<b>252</b>	<b>202</b>	

**LEGEND:**

KDWCD - Kaweah Delta Water Conservation District (5603)  
TID - Tulare Irrigation District (5604)  
KCWD - Kings County Water District (5129)

**KAWEAH DELTA WATER CONSERVATION DISTRICT  
AVERAGE GROUND WATER CHANGES  
BY HYDROLOGIC ZONES**

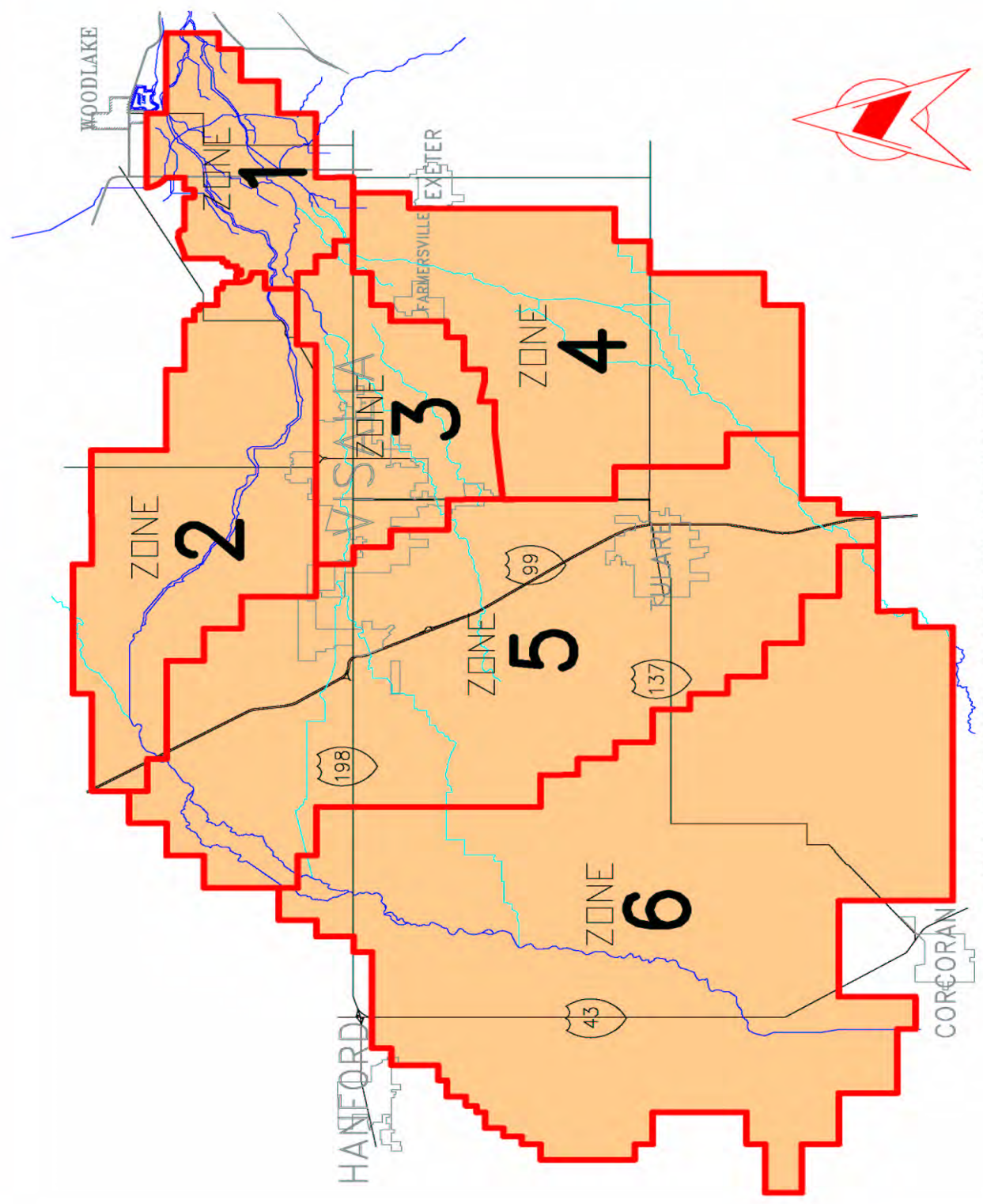
**SUMMARY  
SPRING 2004 - SPRING 2005**

<b>HYDROLOGIC ZONE</b>	<b>NUMBER OF WELLS COMPARED</b>	<b>SPRING 2004 AVG DEPTH TO WATER</b>	<b>SPRING 2005 AVG DEPTH TO WATER</b>	<b>AVERAGE CHANGE IN DEPTH</b>
1	11	27.2	26.7	0.5
2	12	71.9	80.4	-8.5
3	8	58.6	62.8	-4.2
4	28	66.0	77.9	-11.9
5	42	107.0	114.1	-7.1
6	58	119.0	123.7	-4.7
<b>TOTAL</b>	<b>159</b>	<b>93.5</b>	<b>100.0</b>	<b>-6.5</b>

**SUMMARY  
FALL 2003 - FALL 2004**

<b>HYDROLOGIC ZONE</b>	<b>NUMBER OF WELLS COMPARED</b>	<b>FALL 2004 AVG DEPTH TO WATER</b>	<b>FALL 2005 AVG DEPTH TO WATER</b>	<b>AVERAGE CHANGE IN DEPTH</b>
1	10	29.5	27.2	2.3
2	14	94.9	76.3	18.6
3	7	65.7	56.3	9.4
4	24	88.3	78.2	10.1
5	60	125.0	113.2	11.8
6	87	137.3	121.1	16.3
<b>TOTAL</b>	<b>202</b>	<b>117.1</b>	<b>103.6</b>	<b>13.4</b>

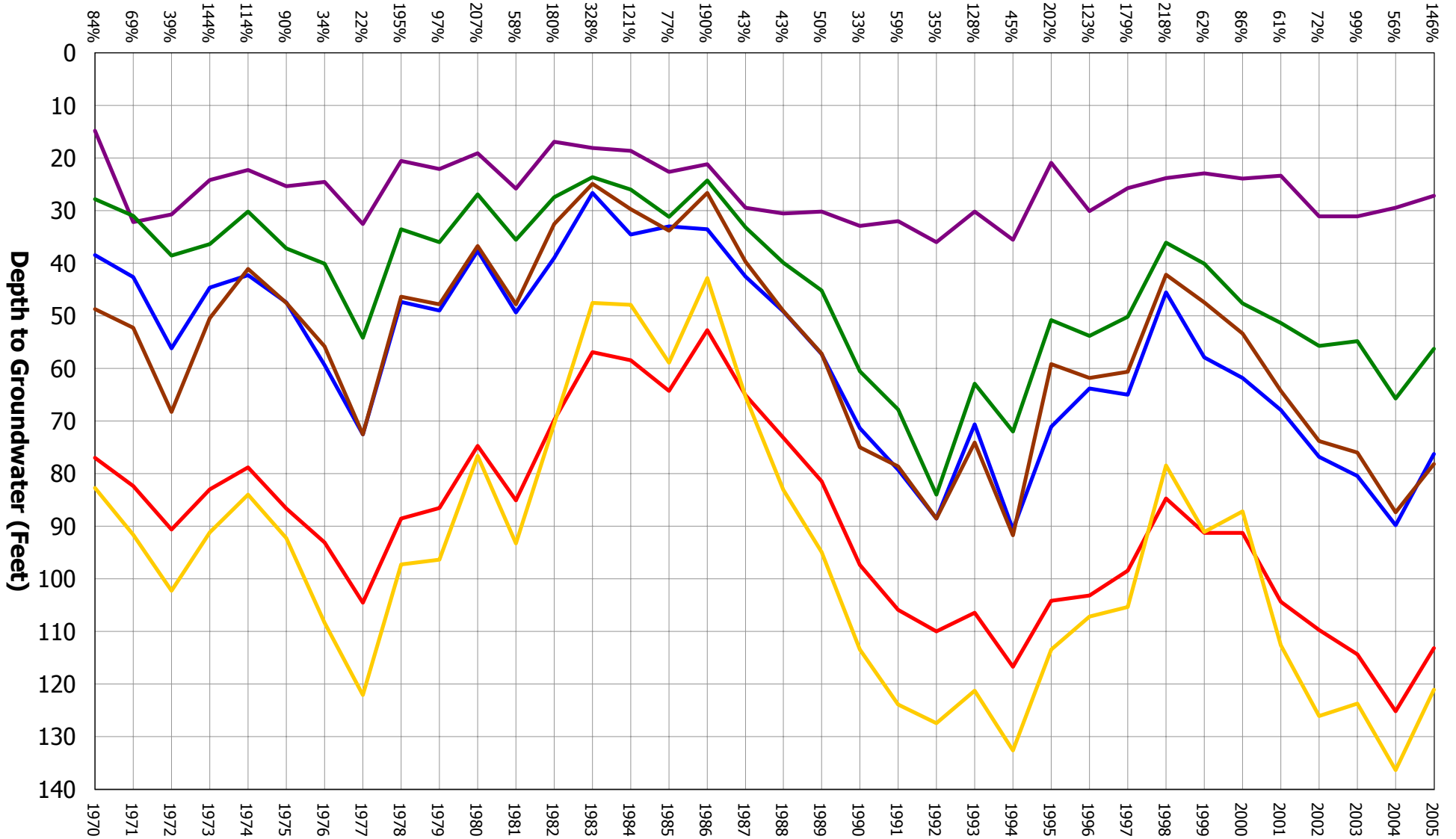
Zone	Year	Season	Value (Ft)
ZONE 1	2004	Spring	27.2 Ft
	2005	Spring	26.7 Ft
ZONE 2	2004	Spring	71.9 Ft
	2005	Spring	80.4 Ft
ZONE 3	2004	Spring	58.6 Ft
	2005	Spring	62.8 Ft
ZONE 4	2004	Spring	66.0 Ft
	2005	Spring	77.9 Ft
ZONE 5	2004	Spring	107.0 Ft
	2005	Spring	114.1 Ft
ZONE 6	2004	Spring	119.0 Ft
	2005	Spring	123.7 Ft
DISTRICT	2004	Spring	93.5 Ft
	2005	Spring	100.0 Ft
ZONE 1	2004	Fall	29.5 Ft
	2005	Fall	27.2 Ft
ZONE 2	2004	Fall	94.9 Ft
	2005	Fall	76.3 Ft
ZONE 3	2004	Fall	65.7 Ft
	2005	Fall	56.3 Ft
ZONE 4	2004	Fall	88.3 Ft
	2005	Fall	78.2 Ft
ZONE 5	2004	Fall	125.0 Ft
	2005	Fall	113.2 Ft
ZONE 6	2004	Fall	137.3 Ft
	2005	Fall	121.1 Ft
DISTRICT	2004	Fall	117.1 Ft
	2005	Fall	103.6 Ft



# DISTRICT HYDROLOGIC ZONES 2005

# ANNUAL AVERAGE GROUNDWATER DEPTHS (FALL MEASUREMENTS)

Water Year Percentage

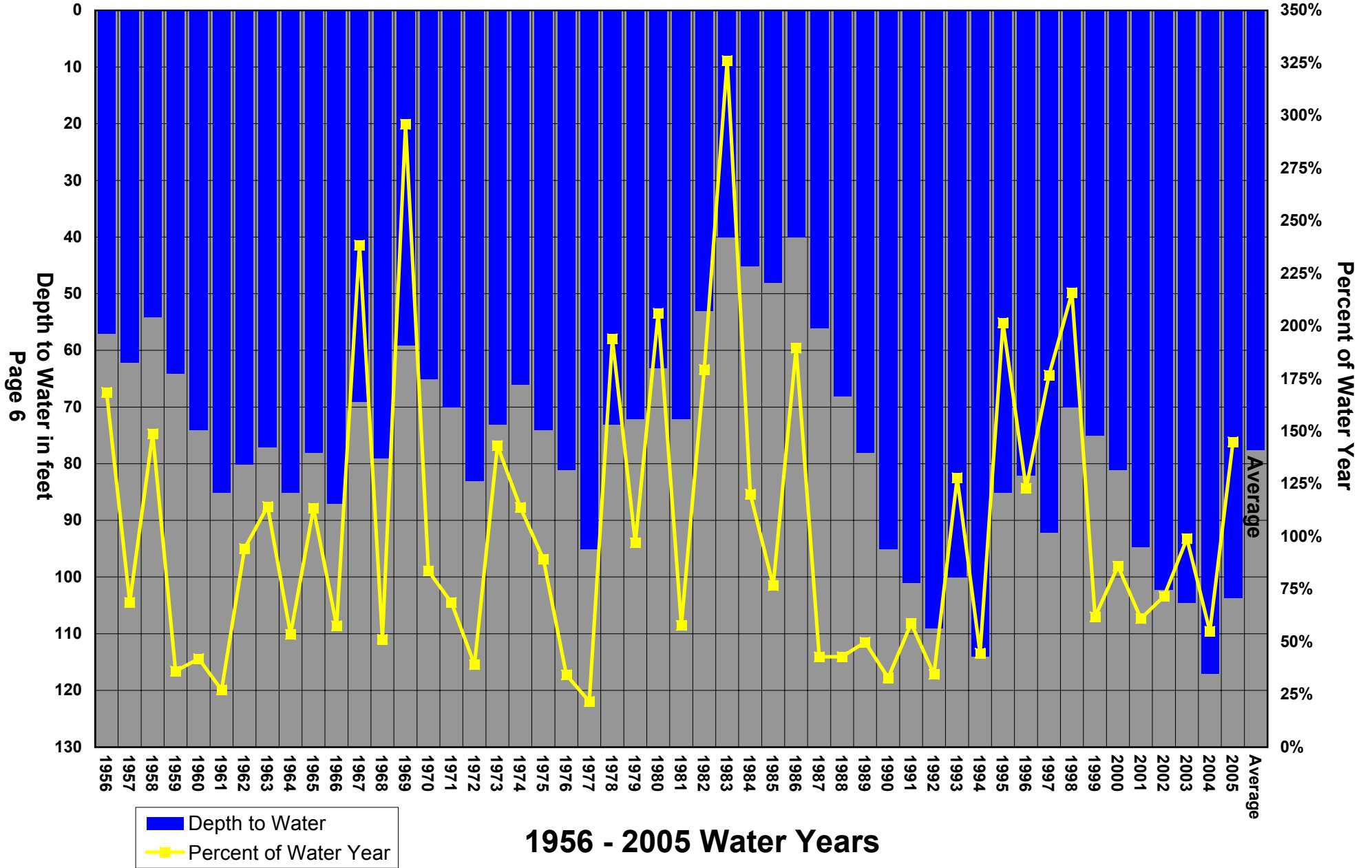


## HYDROLOGIC ZONES

- Zone 1
- Zone 2
- Zone 3
- Zone 4
- Zone 5
- Zone 6

# Kaweah Delta Water Conservation District

Fall Water Depth Compared to Percent Water Year





## KAWEAH DELTA WATER CONSERVATION DISTRICT GROUNDWATER READINGS

AGENCY CODE	TOWNSHIP (EAST)	RANGE (SOUTH)	SECTION	LOCATION CODE	HYDROLOGIC ZONE	SPRING			FALL		
						2004 DEPTH	2005 DEPTH	CHANGE IN	2004 DEPTH	2005 DEPTH	CHANGE IN
						TO WATER	TO WATER	DEPTH	TO WATER	TO WATER	DEPTH
5603	17	26	36	R1	1	24.5	24.5	0.0	-	-	N/A
5603	18	26	1	Q3	1	18.0	-	N/A	21.0	18.0	3.0
5603	18	26	9	H1	1	26.5	27.5	-1.0	22.5	23.5	-1.0
5603	18	26	10	J1	1	24.0	24.0	0.0	30.0	21.0	9.0
5603	18	26	16	K1	1	18.0	20.0	-2.0	25.0	20.0	5.0
5603	18	26	17	L1	1	27.0	25.0	2.0	27.5	26.0	1.5
5603	18	26	19	B2	1	38.0	39.5	-1.5	20.5	34.5	-14.0
5603	18	26	24	J2	1	40.0	45.0	-5.0	53.0	49.0	4.0
5603	18	26	24	J3	1	42.5	48.5	-6.0	55.5	49.5	6.0
5603	18	27	5	J1	1	17.5	16.0	1.5	15.5	13.0	2.5
5603	18	27	7	B1	1	24.0	20.5	3.5	24.0	17.0	7.0
5603	18	27	7	R2	1	17.0	3.0	14.0	-	16.0	N/A

**Zone 1 for KDWCD**

**Wells compared = 11**

**Wells compared = 10**

**Change in water depth = 0.5**

**Change in water depth = 2.3**

## KAWEAH DELTA WATER CONSERVATION DISTRICT GROUNDWATER READINGS

AGENCY CODE	TOWNSHIP (EAST)	RANGE (SOUTH)	SECTION	LOCATION CODE	HYDROLOGIC ZONE	SPRING			FALL		
						2004 DEPTH	2005 DEPTH	CHANGE IN DEPTH	2004 DEPTH	2005 DEPTH	CHANGE IN DEPTH
						TO WATER	TO WATER		TO WATER	TO WATER	
5603	17	23	27	L1	2	94.5	-	N/A	-	-	N/A
5603	17	24	20	L1	2	28.5	37.5	-9.0	35.5	29.5	6.0
5603	17	24	27	F1	2	42.2	53.2	-11.0	-	-	N/A
5603	17	24	34	B1	2	53.5	63.5	-10.0	74.5	33.5	41.0
5603	17	24	36	H3	2	80.5	90.5	-10.0	100.5	78.5	22.0
5603	17	25	29	E1	2	105.0	90.0	15.0	127.0	111.5	15.5
5603	18	24	2	H1	2	90.5	96.5	-6.0	114.5	67.5	47.0
5603	18	24	4	J1	2	78.5	87.5	-9.0	104.5	68.5	36.0
5603	18	24	10	J1	2	89.5	-	N/A	-	65.5	N/A
5603	18	24	13	H2	2	79.0	113.0	-34.0	-	71.0	N/A
5603	18	24	15	R3	2	-	106.0	N/A	117.0	100.0	17.0
5603	18	25	4	H1	2	84.0	96.0	-12.0	102.0	98.0	4.0
5603	18	25	5	E2	2	88.0	-	N/A	112.0	100.0	12.0
5603	18	25	5	Q1	2	85.0	-	N/A	106.0	92.0	14.0
5603	18	25	15	A2	2	69.0	73.0	-4.0	73.0	67.0	6.0
5603	18	25	15	C1	2	66.0	72.5	-6.5	66.0	68.0	-2.0
5603	18	25	16	B1	2	85.0	-	N/A	98.0	68.0	30.0
5603	18	25	18	A1	2	-	-	N/A	-	56.0	N/A
5603	18	25	19	H1	2	86.0	91.0	-5.0	98.0	86.0	12.0
5603	18	25	20	J1	2	75.0	-	N/A	-	-	N/A
5603	18	25	22	P1	2	-	-	N/A	-	-	N/A
5603	18	26	7	L1	2	-	-	N/A	18.5	-	N/A

**Zone 2 for KDWCD**

**Wells compared = 12**

**Wells compared = 14**

**Change in water depth = -8.5**

**Change in water depth = 18.6**

## KAWEAH DELTA WATER CONSERVATION DISTRICT GROUNDWATER READINGS

AGENCY CODE	TOWNSHIP (EAST)	RANGE (SOUTH)	SECTION	LOCATION CODE	HYDROLOGIC ZONE	SPRING			FALL		
						2004 DEPTH TO WATER	2005 DEPTH TO WATER	CHANGE IN DEPTH	2004 DEPTH TO WATER	2005 DEPTH TO WATER	CHANGE IN DEPTH
						5603	18	25	23	J1	3
5603	18	25	27	Q1	3	-	-	N/A	-	-	N/A
5603	18	25	33	R1	3	79.5	85.5	-6.0	79.5	75.0	4.5
5603	18	25	34	L1	3	-	-	N/A	-	-	N/A
5603	18	26	29	D1	3	-	-	N/A	-	-	N/A
5603	18	26	30	N1	3	41.5	46.5	-5.0	49.5	44.0	5.5
5603	19	25	1	P1	3	44.5	27.0	17.5	42.5	43.5	-1.0
5603	19	25	2	A1	3	47.0	56.5	-9.5	56.0	50.0	6.0
5603	19	25	7	K1	3	-	-	N/A	-	-	N/A
5603	19	25	7	K3	3	-	-	N/A	-	-	N/A
5603	19	25	9	H1	3	71.5	85.0	-13.5	-	-	N/A
5603	19	25	10	R1	3	68.5	78.5	-10.0	82.5	70.5	12.0
5603	19	25	16	A2	3	69.0	76.0	-7.0	93.0	73.0	20.0

**Zone 3 for KDWCD**

Wells compared =	8	Wells compared =	7
Change in water depth =	-4.2	Change in water depth =	9.4

## KAWEAH DELTA WATER CONSERVATION DISTRICT GROUNDWATER READINGS

AGENCY CODE	TOWNSHIP (EAST)	RANGE (SOUTH)	SECTION	LOCATION CODE	HYDROLOGIC ZONE	SPRING			FALL		
						2004 DEPTH	2005 DEPTH	CHANGE IN DEPTH	2004 DEPTH	2005 DEPTH	CHANGE IN DEPTH
						TO WATER	TO WATER		TO WATER	TO WATER	
5603	18	26	32	A1	4	26.0	24.0	2.0	24.5	28.0	-3.5
5603	19	25	13	A2	4	46.0	62.0	-16.0	-	46.0	N/A
5603	19	25	23	D2	4	59.0	71.5	-12.5	67.0	62.0	5.0
5603	19	25	24	M1	4	58.5	68.5	-10.0	-	-	N/A
5603	19	25	27	A1	4	68.0	81.0	-13.0	86.0	72.0	14.0
5603	19	25	28	H1	4	73.0	-	N/A	92.0	77.0	15.0
5603	19	25	34	A2	4	72.5	90.0	-17.5	-	-	N/A
5603	19	25	35	B2	4	64.0	73.5	-9.5	78.5	68.5	10.0
5603	19	26	4	J1	4	-	-	N/A	-	-	N/A
5603	19	26	5	C1	4	30.0	31.5	-1.5	32.5	26.0	6.5
5603	19	26	5	N1	4	46.8	46.8	0.0	45.8	37.3	8.5
5603	19	26	9	J2	4	-	-	N/A	-	-	N/A
5603	19	26	16	J2	4	62.5	71.5	-9.0	-	95.5	N/A
5603	19	26	17	L1	4	54.5	60.5	-6.0	68.0	60.5	7.5
5603	19	26	20	A1	4	-	-	N/A	74.5	66.0	8.5
5603	19	26	21	J1	4	66.0	-	N/A	-	-	N/A
5603	19	26	28	D1	4	57.5	76.0	-18.5	72.0	70.0	2.0
5603	19	26	30	D1	4	57.0	96.5	-39.5	90.0	89.0	1.0
5603	19	26	30	Q1	4	61.0	-	N/A	81.0	-	N/A
5603	19	26	33	C1	4	60.0	67.0	-7.0	-	71.0	N/A
5603	19	26	33	M1	4	59.0	69.0	-10.0	83.0	67.0	16.0
5603	20	25	1	A1	4	56.5	67.0	-10.5	78.0	53.0	25.0
5603	20	25	3	R1	4	70.0	93.0	-23.0	-	78.0	N/A
5603	20	25	12	A1	4	63.5	66.5	-3.0	-	61.5	N/A
5603	20	25	14	F1	4	80.5	85.5	-5.0	107.5	97.5	10.0
5603	20	25	14	F2	4	77.5	84.0	-6.5	110.5	92.0	18.5
5603	20	25	14	F4	4	75.0	82.0	-7.0	104.0	100.0	4.0
5603	20	25	16	J2	4	83.0	96.0	-13.0	81.0	88.0	-7.0
5603	20	25	17	A2	4	92.0	140.0	-48.0	132.0	110.0	22.0
5603	20	25	21	J1	4	-	-	N/A	-	-	N/A
5603	20	25	23	H1	4	-	102.5	N/A	125.5	101.5	24.0
5603	20	25	24	R1	4	91.5	102.5	-11.0	109.5	113.5	-4.0
5603	20	25	28	H2	4	89.0	-	N/A	147.0	147.0	0.0
5603	20	26	7	R2	4	-	91.0	N/A	-	106.0	N/A
5604	19	25	19	B1	4	90.0	98.0	-8.0	105.0	92.0	13.0
5604	19	25	20	P1	4	76.0	76.0	0.0	91.0	57.0	34.0
5604	19	25	29	B1	4	75.0	80.0	-5.0	71.0	-	N/A
5604	19	25	30	C1	4	95.0	120.0	-25.0	115.0	102.0	13.0
5604	19	25	31	A1	4	-	-	N/A	-	-	N/A

Zone 4 for KDWCD & TID

Wells compared = 28

Wells compared = 24

Change in water depth = -11.9

Change in water depth = 10.1

## KAWEAH DELTA WATER CONSERVATION DISTRICT GROUNDWATER READINGS

AGENCY CODE	TOWNSHIP (EAST)	RANGE (SOUTH)	SECTION	LOCATION CODE	HYDROLOGIC ZONE	SPRING			FALL		
						2004 DEPTH	2005 DEPTH	CHANGE IN DEPTH	2004 DEPTH	2005 DEPTH	CHANGE IN DEPTH
						TO WATER	TO WATER		TO WATER	TO WATER	
5129	18	23	15	A1	5	96.7	88.3	8.4	-	113.3	N/A
5129	18	23	16	R1	5	-	-	N/A	-	-	N/A
5129	18	23	21	J1	5	-	-	N/A	152.0	128.7	23.3
5129	18	23	26	L1	5	-	-	N/A	119.0	124.7	-5.7
5129	18	23	27	P1	5	123.9	-	N/A	120.0	116.6	3.4
5129	18	23	28	B1	5	107.0	100.2	6.8	125.0	107.6	17.4
5129	18	23	28	R1	5	-	120.7	N/A	-	116.7	N/A
5129	18	23	34	A1	5	120.7	114.7	6.0	128.0	124.2	3.8
5129	19	23	10	C1	5	105.6	-	N/A	137.0	108.3	28.7
5129	19	23	10	D1	5	-	-	N/A	-	-	N/A
5129	19	23	11	C1	5	88.0	-	N/A	-	98.3	N/A
5603	18	23	2	Q1	5	98.5	98.5	0.0	-	114.5	N/A
5603	18	23	12	B1	5	88.5	-	N/A	-	-	N/A
5603	18	23	14	A1	5	95.0	118.0	-23.0	-	143.0	N/A
5603	18	23	21	Q1	5	-	-	N/A	-	-	N/A
5603	18	23	24	K1	5	112.7	111.7	1.0	-	122.7	N/A
5603	18	23	26	F1	5	119.4	-	N/A	147.4	135.4	12.0
5603	18	23	33	J1	5	123.0	129.5	-6.5	140.5	143.5	-3.0
5603	18	23	34	A2	5	125.0	142.0	-17.0	153.0	155.0	-2.0
5603	18	24	6	H1	5	64.0	81.0	-17.0	90.0	76.0	14.0
5603	18	24	7	H1	5	78.5	-	N/A	103.5	103.5	0.0
5603	18	24	17	L1	5	84.0	85.0	-1.0	95.0	82.0	13.0
5603	18	24	31	C1	5	107.5	-	N/A	133.5	134.5	-1.0
5603	19	23	2	F1	5	112.5	116.0	-3.5	114.5	108.5	6.0
5603	19	23	10	Q1	5	114.4	-	N/A	127.4	124.4	3.0
5603	19	23	11	C1	5	106.5	-	N/A	126.5	-	N/A
5603	19	23	12	L1	5	-	-	N/A	-	-	N/A
5603	19	23	22	H1	5	105.6	138.6	-33.0	-	80.6	N/A
5603	19	24	3	A1	5	-	-	N/A	-	-	N/A
5603	19	24	4	D1	5	100.0	-	N/A	133.0	-	N/A
5603	19	24	6	N1	5	-	-	N/A	-	-	N/A
5603	19	24	14	B1	5	106.6	-	N/A	-	-	N/A
5603	19	24	18	J1	5	128.6	150.6	-22.0	165.6	137.6	28.0
5603	19	24	22	C1	5	122.6	138.6	-16.0	147.6	125.6	22.0
5603	19	24	31	K1	5	120.7	133.7	-13.0	135.7	123.7	12.0
5603	20	24	24	H1	5	124.5	154.5	-30.0	161.5	161.5	0.0
5603	20	24	25	N1	5	56.5	66.0	-9.5	66.5	58.5	8.0
5603	20	24	34	C1	5	61.5	71.5	-10.0	74.5	62.5	12.0
5603	20	25	19	R1	5	106.5	-	N/A	-	129.5	N/A
5603	20	25	32	Q1	5	-	-	N/A	-	-	N/A
5603	21	24	1	L1	5	126.5	151.5	-25.0	-	173.5	N/A
5604	19	23	13	A3	5	96.0	-	N/A	-	101.0	N/A
5604	19	23	19	H1	5	109.0	-	N/A	-	112.0	N/A
5604	19	23	20	C1	5	109.0	110.0	-1.0	116.0	108.0	8.0
5604	19	23	23	D1	5	96.0	103.0	-7.0	106.0	82.0	24.0
5604	19	23	24	L1	5	97.0	105.0	-8.0	109.0	92.0	17.0
5604	19	23	25	C1	5	97.0	110.0	-13.0	114.0	96.0	18.0
5604	19	23	25	L2	5	-	-	N/A	117.0	107.0	10.0
5604	19	23	26	B1	5	82.0	99.0	-17.0	105.0	64.0	41.0
5604	19	23	27	A1	5	85.0	106.0	-21.0	102.0	88.0	14.0
5604	19	23	35	H1	5	100.0	-	N/A	158.0	81.0	77.0
5604	19	24	10	G1	5	108.0	-	N/A	124.0	-	N/A

## KAWEAH DELTA WATER CONSERVATION DISTRICT GROUNDWATER READINGS

AGENCY CODE	TOWNSHIP (EAST)	RANGE (SOUTH)	SECTION	LOCATION CODE	HYDROLOGIC ZONE	SPRING			FALL		
						2004 DEPTH TO WATER	2005 DEPTH TO WATER	CHANGE IN DEPTH	2004 DEPTH TO WATER	2005 DEPTH TO WATER	CHANGE IN DEPTH
						5604	19	24	13	C2	5
5604	19	24	14	A1	5	116.0	-	N/A	130.0	123.0	7.0
5604	19	24	16	P1	5	-	-	N/A	-	-	N/A
5604	19	24	17	A1	5	111.0	-	N/A	139.0	124.0	15.0
5604	19	24	17	N1	5	131.0	-	N/A	136.0	117.0	19.0
5604	19	24	18	R1	5	132.0	120.0	12.0	143.0	121.0	22.0
5604	19	24	19	L1	5	105.0	115.0	-10.0	135.0	112.0	23.0
5604	19	24	20	J1	5	-	125.0	N/A	136.0	120.0	16.0
5604	19	24	22	C2	5	114.0	95.0	19.0	129.0	107.0	22.0
5604	19	24	22	P1	5	114.0	125.0	-11.0	138.0	115.0	23.0
5604	19	24	23	D1	5	-	-	N/A	-	116.0	N/A
5604	19	24	24	A3	5	-	-	N/A	-	100.0	N/A
5604	19	24	25	D1	5	-	-	N/A	-	-	N/A
5604	19	24	27	H1	5	113.0	-	N/A	-	113.0	N/A
5604	19	24	27	Q1	5	116.0	124.0	-8.0	-	128.0	N/A
5604	19	24	28	H1	5	118.0	126.0	-8.0	129.0	122.0	7.0
5604	19	24	29	D1	5	120.0	-	N/A	137.0	118.0	19.0
5604	19	24	29	R1	5	125.0	115.0	10.0	128.0	119.0	9.0
5604	19	24	30	J1	5	110.0	120.0	-10.0	130.0	128.0	2.0
5604	19	24	31	E1	5	124.0	144.0	-20.0	154.0	136.0	18.0
5604	19	24	33	A2	5	118.0	-	N/A	135.0	126.0	9.0
5604	19	24	33	H1	5	119.0	97.0	22.0	137.0	128.0	9.0
5604	19	24	35	R1	5	-	-	N/A	-	-	N/A
5604	19	24	36	C1	5	-	-	N/A	-	-	N/A
5604	19	24	36	R1	5	115.0	128.0	-13.0	129.0	-	N/A
5604	20	23	2	H1	5	99.0	-	N/A	-	98.0	N/A
5604	20	23	12	A1	5	100.0	-	N/A	126.0	117.0	9.0
5604	20	24	4	E1	5	114.0	-	N/A	134.0	121.0	13.0
5604	20	24	4	J2	5	-	-	N/A	-	-	N/A
5604	20	24	6	A1	5	117.0	126.0	-9.0	138.0	126.0	12.0
5604	20	24	7	G1	5	-	-	N/A	-	112.0	N/A
5604	20	24	9	M1	5	-	110.0	N/A	118.0	110.0	8.0
5604	20	24	14	R1	5	-	112.0	N/A	122.0	112.0	10.0
5604	20	24	15	P1	5	84.0	94.0	-10.0	96.0	94.0	2.0
5604	20	24	16	H1	5	123.0	-	N/A	137.0	137.0	0.0
5604	20	24	17	A2	5	-	104.0	N/A	114.0	105.0	9.0
5604	20	24	17	P1	5	100.0	-	N/A	94.0	118.0	-24.0
5604	20	24	18	F1	5	117.0	-	N/A	138.0	126.0	12.0
5604	20	24	20	M2	5	90.0	-	N/A	-	93.0	N/A
5604	20	24	27	C1	5	66.0	-	N/A	74.0	123.0	-49.0
5604	20	24	28	L1	5	-	70.0	N/A	124.0	69.0	55.0
5604	20	24	29	B1	5	92.0	108.0	-16.0	90.0	89.0	1.0
5604	20	25	6	C1	5	112.0	93.0	19.0	132.0	115.0	17.0
5604	20	25	18	M1	5	142.0	126.0	16.0	144.0	147.0	-3.0

Zone 5 for KDWCD & TID & KCWD

Wells compared = 42

Wells compared = 60

Change in water depth = -7.1

Change in water depth = 11.8

## KAWEAH DELTA WATER CONSERVATION DISTRICT GROUNDWATER READINGS

AGENCY CODE	TOWNSHIP (EAST)	RANGE (SOUTH)	SECTION	LOCATION CODE	HYDROLOGIC ZONE	SPRING			FALL		
						2004 DEPTH	2005 DEPTH	CHANGE IN DEPTH	2004 DEPTH	2005 DEPTH	CHANGE IN DEPTH
						TO WATER	TO WATER		TO WATER	TO WATER	
5129	18	23	32	B1	6	-	-	N/A	158.0	124.6	33.4
5129	18	23	33	C1	6	-	-	N/A	-	114.4	N/A
5129	19	21	23	J1	6	135.0	124.2	10.8	-	137.8	N/A
5129	19	21	24	L1	6	-	-	N/A	-	-	N/A
5129	19	21	25	J1	6	110.7	97.8	12.9	112.5	103.0	9.5
5129	19	21	26	B1	6	166.2	-	N/A	173.0	147.9	25.1
5129	19	21	36	M1	6	39.2	-	N/A	42.7	39.4	3.3
5129	19	22	4	B1	6	101.0	-	N/A	113.8	107.1	6.7
5129	19	22	4	M1	6	125.5	107.4	18.1	133.4	122.0	11.4
5129	19	22	7	A1	6	-	-	N/A	-	-	N/A
5129	19	22	10	A1	6	-	-	N/A	-	-	N/A
5129	19	22	15	M1	6	98.6	-	N/A	107.4	104.3	3.1
5129	19	22	19	M1	6	-	-	N/A	-	108.7	N/A
5129	19	22	27	C1	6	-	-	N/A	-	134.7	N/A
5129	19	22	32	D1	6	166.0	-	N/A	149.6	144.7	4.9
5129	19	22	36	E1	6	110.2	-	N/A	132.0	110.6	21.4
5129	19	23	8	J1	6	109.2	-	N/A	-	103.2	N/A
5129	20	21	11	D1	6	222.3	165.2	57.1	231.7	184.0	47.7
5129	20	21	11	N1	6	254.2	161.4	92.8	209.4	184.6	24.8
5129	20	22	1	Q1	6	119.1	-	N/A	126.9	115.8	11.1
5129	20	22	2	C1	6	-	119.9	N/A	124.3	113.0	11.3
5129	20	22	3	P1	6	111.2	105.6	5.6	121.7	109.8	11.9
5129	20	22	4	D1	6	96.1	106.2	-10.1	110.6	97.9	12.7
5129	20	22	5	L1	6	195.7	-	N/A	179.1	153.4	25.7
5129	20	22	6	C1	6	-	-	N/A	200.1	152.4	47.7
5129	20	22	6	H1	6	197.4	-	N/A	169.0	162.6	6.4
5129	20	22	7	A2	6	188.3	148.2	40.1	169.8	141.6	28.2
5129	20	22	7	A4	6	158.2	148.5	9.7	167.0	142.6	24.4
5129	20	22	8	J1	6	133.0	150.5	-17.5	127.9	108.0	19.9
5129	20	22	9	H1	6	206.0	-	N/A	173.2	130.3	42.9
5129	20	22	15	A1	6	-	-	N/A	-	-	N/A
5129	20	22	20	A2	6	84.4	89.3	-4.9	92.6	74.0	18.6
5129	20	23	5	J1	6	95.6	-	N/A	-	-	N/A
5129	20	23	8	G1	6	-	84.3	N/A	-	126.7	N/A
5603	18	22	32	J1	6	-	-	N/A	-	-	N/A
5603	18	22	34	R1	6	82.7	92.7	-10.0	98.7	76.7	22.0
5603	18	22	36	P1	6	-	-	N/A	-	-	N/A
5603	18	22	36	P2	6	-	-	N/A	-	-	N/A
5603	19	21	13	A1	6	132.6	121.6	11.0	196.6	150.6	46.0
5603	19	21	13	C3	6	121.0	-	N/A	195.0	132.0	63.0
5603	19	21	23	A3	6	-	-	N/A	-	-	N/A
5603	19	21	25	P1	6	-	-	N/A	-	-	N/A
5603	19	21	34	D1	6	121.5	-	N/A	140.5	115.5	25.0
5603	19	22	1	N2	6	78.5	92.5	-14.0	98.5	82.5	16.0
5603	19	22	2	K1	6	-	-	N/A	97.8	76.3	21.5
5603	19	22	9	J1	6	90.0	-	N/A	-	-	N/A
5603	19	22	10	R2	6	90.0	114.0	-24.0	112.0	-	N/A
5603	19	22	16	A2	6	-	-	N/A	107.0	-	N/A
5603	19	22	17	E1	6	111.6	-	N/A	-	-	N/A
5603	19	22	17	L1	6	92.4	138.4	-46.0	137.4	99.4	38.0
5603	19	22	21	C1	6	119.0	121.0	-2.0	137.0	131.0	6.0
5603	19	22	22	A1	6	89.0	95.0	-6.0	97.0	92.0	5.0

## KAWEAH DELTA WATER CONSERVATION DISTRICT GROUNDWATER READINGS

AGENCY CODE	TOWNSHIP (EAST)	RANGE (SOUTH)	SECTION	LOCATION CODE	HYDROLOGIC ZONE	SPRING			FALL		
						2004 DEPTH TO WATER	2005 DEPTH TO WATER	CHANGE IN DEPTH	2004 DEPTH TO WATER	2005 DEPTH TO WATER	CHANGE IN DEPTH
5603	19	22	23	A1	6	-	113.5	N/A	114.5	109.5	5.0
5603	19	22	24	B1	6	93.8	-	N/A	108.8	104.8	4.0
5603	19	22	28	D1	6	90.0	113.0	-23.0	108.0	95.0	13.0
5603	19	22	30	D1	6	-	-	N/A	81.5	75.5	6.0
5603	19	22	31	B2	6	93.0	-	N/A	-	-	N/A
5603	19	22	33	D2	6	-	-	N/A	-	-	N/A
5603	19	22	34	L1	6	113.5	127.5	-14.0	-	124.5	N/A
5603	19	23	6	H1	6	-	152.0	N/A	137.0	126.0	11.0
5603	19	23	7	A2	6	-	115.5	N/A	135.5	135.5	0.0
5603	19	23	21	C1	6	104.4	116.4	-12.0	119.4	118.4	1.0
5603	20	21	36	P1	6	251.0	265.0	-14.0	287.0	258.0	29.0
5603	20	22	3	C2	6	119.0	122.0	-3.0	-	122.0	N/A
5603	20	22	4	C1	6	101.0	78.0	23.0	117.0	98.0	19.0
5603	20	22	7	A3	6	158.0	165.0	-7.0	-	164.0	N/A
5603	20	22	7	M1	6	-	-	N/A	-	-	N/A
5603	20	22	8	A2	6	151.0	159.0	-8.0	-	-	N/A
5603	20	22	13	C1	6	-	-	N/A	267.5	218.5	49.0
5603	20	22	14	C1	6	214.0	249.5	-35.5	262.5	193.5	69.0
5603	20	22	23	M1	6	274.5	-	N/A	287.5	191.5	96.0
5603	20	22	24	R1	6	-	-	N/A	-	-	N/A
5603	20	22	27	A1	6	-	104.5	N/A	-	-	N/A
5603	20	22	28	H1	6	284.5	-	N/A	-	-	N/A
5603	20	22	33	F1	6	99.0	102.0	-3.0	126.0	88.0	38.0
5603	20	22	35	L1	6	-	-	N/A	-	-	N/A
5603	20	22	36	A1	6	134.0	137.0	-3.0	154.0	153.0	1.0
5603	20	23	11	C1	6	122.6	127.6	-5.0	144.6	126.6	18.0
5603	20	25	2	A1	6	69.5	-	N/A	81.5	63.5	18.0
5603	21	23	2	A1	6	104.5	165.5	-61.0	-	136.5	N/A
5603	21	23	2	K1	6	-	-	N/A	-	-	N/A
5603	21	23	3	D1	6	-	130.8	N/A	101.8	106.8	-5.0
5603	21	23	7	J1	6	121.0	124.0	-3.0	187.0	-	N/A
5603	21	23	11	D1	6	161.5	-	N/A	-	176.5	N/A
5603	21	23	12	C1	6	109.5	109.5	0.0	111.5	-	N/A
5603	21	23	13	A2	6	124.0	112.0	12.0	139.0	-	N/A
5603	21	23	17	M1	6	-	-	N/A	-	-	N/A
5603	21	23	22	J1	6	102.0	139.0	-37.0	-	114.0	N/A
5603	21	24	3	L1	6	141.4	120.4	21.0	-	-	N/A
5603	21	24	5	H2	6	107.2	121.2	-14.0	138.2	108.7	29.5
5603	21	24	7	B1	6	-	107.0	N/A	122.0	117.0	5.0
5603	21	24	8	A1	6	79.4	82.4	-3.0	-	-	N/A
5603	21	24	9	C1	6	79.0	107.0	-28.0	94.0	-	N/A
5603	21	24	18	A1	6	95.0	95.0	0.0	-	121.0	N/A
5604	19	23	21	P1	6	97.0	105.0	-8.0	110.0	94.0	16.0
5604	19	23	27	P1	6	85.0	92.0	-7.0	116.0	73.0	43.0
5604	19	23	30	H2	6	-	-	N/A	-	-	N/A
5604	19	23	31	R1	6	-	-	N/A	116.0	106.0	10.0
5604	19	23	32	H1	6	-	-	N/A	-	123.0	N/A
5604	19	23	34	L1	6	97.0	98.0	-1.0	115.0	76.0	39.0
5604	20	22	1	H1	6	115.0	-	N/A	131.0	113.0	18.0
5604	20	22	25	R1	6	95.0	143.0	-48.0	157.0	147.0	10.0
5604	20	23	3	L1	6	102.0	115.0	-13.0	125.0	98.0	27.0
5604	20	23	4	F1	6	105.0	116.0	-11.0	-	112.0	N/A



## KAWEAH DELTA WATER CONSERVATION DISTRICT GROUNDWATER READINGS

AGENCY CODE	TOWNSHIP (EAST)	RANGE (SOUTH)	SECTION	LOCATION CODE	HYDROLOGIC ZONE	SPRING			FALL		
						2004 DEPTH TO WATER	2005 DEPTH TO WATER	CHANGE IN DEPTH	2004 DEPTH TO WATER	2005 DEPTH TO WATER	CHANGE IN DEPTH
5604	20	23	7	H3	6	-	-	N/A	-	125.0	N/A
5604	20	23	8	H1	6	120.0	126.0	-6.0	133.0	126.0	7.0
5604	20	23	9	J2	6	102.0	112.0	-10.0	117.0	89.0	28.0
5604	20	23	11	L1	6	107.0	117.0	-10.0	126.0	108.0	18.0
5604	20	23	13	E2	6	108.0	110.0	-2.0	119.0	110.0	9.0
5604	20	23	15	A1	6	103.0	117.0	-14.0	121.0	115.0	6.0
5604	20	23	16	J1	6	107.0	-	N/A	129.0	101.0	28.0
5604	20	23	17	C1	6	121.0	-	N/A	144.0	138.0	6.0
5604	20	23	18	R1	6	130.0	-	N/A	150.0	135.0	15.0
5604	20	23	19	J1	6	129.0	146.0	-17.0	153.0	147.0	6.0
5604	20	23	21	B1	6	105.0	-	N/A	126.0	123.0	3.0
5604	20	23	24	L1	6	108.0	95.0	13.0	121.0	127.0	-6.0
5604	20	23	25	J2	6	-	128.0	N/A	135.0	152.0	-17.0
5604	20	23	26	C1	6	-	102.0	N/A	106.0	95.0	11.0
5604	20	23	26	R1	6	-	119.0	N/A	126.0	113.0	13.0
5604	20	23	27	D1	6	-	117.0	N/A	-	113.0	N/A
5604	20	23	27	R1	6	-	108.0	N/A	130.0	109.0	21.0
5604	20	23	29	J2	6	110.0	116.0	-6.0	128.0	123.0	5.0
5604	20	23	30	R1	6	-	-	N/A	157.0	134.0	23.0
5604	20	23	31	N1	6	-	-	N/A	-	-	N/A
5604	20	24	30	J2	6	101.0	110.0	-9.0	113.0	107.0	6.0
5604	20	24	31	R1	6	87.0	94.0	-7.0	100.0	91.0	9.0
5604	20	24	33	C1	6	-	-	N/A	-	90.0	N/A
5604	21	23	2	C1	6	101.0	-	N/A	110.0	104.0	6.0
5604	21	23	3	N1	6	97.0	123.0	-26.0	-	120.0	N/A
5604	21	23	4	A1	6	-	-	N/A	-	125.0	N/A
5604	21	23	5	A2	6	123.0	120.0	3.0	115.0	120.0	-5.0
5604	21	23	5	E2	6	101.0	-	N/A	140.0	126.0	14.0
5604	21	23	5	R1	6	101.0	-	N/A	125.0	118.0	7.0
5604	21	23	7	H1	6	-	-	N/A	-	150.0	N/A
5604	21	23	8	F2	6	-	-	N/A	118.0	137.0	-19.0
5604	21	23	8	R1	6	-	110.0	N/A	119.0	121.0	-2.0
5604	21	23	10	J2	6	100.0	-	N/A	112.0	121.0	-9.0
5604	21	23	14	C1	6	-	-	N/A	129.0	127.0	2.0
5604	21	23	21	C2	6	-	-	N/A	118.0	-	N/A
5604	21	23	21	C3	6	-	-	N/A	140.0	128.0	12.0
5604	21	23	22	H1	6	-	80.0	N/A	-	112.0	N/A
5604	21	24	4	F1	6	97.0	-	N/A	115.0	162.0	-47.0
						6899.6	7172.5	-272.9	11945.5	10531.4	1414.1

**Zone 6 for KDWCD & TID & KCWD**

**Wells compared = 58**

**Wells compared = 87**

**Change in water depth = -4.7**

**Change in water depth = 16.3**